

# PRODUCT CATALOGUE



**THOROUGHCLEAN**  
WATER BLASTERS *Over-engineered — On purpose*

## COMPANY PROFILE

### A proud tradition of building top-quality high pressure cleaners / washers

Since 1984, ThoroughClean has specialised in designing and building the toughest and most robust high-pressure water cleaning equipment on the market.

Our pressure washers are well known, respected and widely used by equipment hire companies, truck wash bays, professional contractors, mining companies, industrial workshops, various companies cleaning heavy industrial equipment and many others across the country as well as offshore.

Over the years, we worked tirelessly to design and construct super-duty, long-life and fully rebuildable pressure cleaners. In doing so, we placed particular emphasis on low running costs, easy maintenance, and long-term serviceability.

We also design specialised heavy-duty pressure cleaners to solve very specific customer needs.

At ThoroughClean, we are over-engineering our pressure cleaners — on purpose. Why? To ensure your investment is a good one and that it will last long after all others have failed you.

Every ThoroughClean pressure cleaner is backed by our promise that it has been “over-engineered — on purpose!” With this philosophy firmly in mind, we continue to manufacture small to medium volume runs of standard and customised machines.

Working in our modern new manufacturing facility, we use heavy industrial and high quality robust motors, engines, pumps, frames and parts, CAD drawings for precision, and ERP System for quality control, to produce durable and hard working pressure cleaners that will withstand the toughest conditions. As a result, we have pressure cleaning equipment still working in the field after more than 20 years.

ThoroughClean are the exclusive Australian distributors for HAWK and are an authorised OEM for Honda, Yanmar, Kohler, Perkins, Kubota, Hatz, WEG and Davey.



All prices shown are exclusive of Goods and Services Tax (GST)

Prices and specifications are subject to change without notification

All images are a representation only and are not to scale



## CONTENTS PAGE

<b>TRAINING</b>	<b>4</b>	<b>HYDROSTATIC PORTABLE TESTERS</b>	<b>42</b>
<b>ELECTRIC PORTABLE BLASTERS</b>	<b>5</b>	E3R-15C-PT + P6R-17C-PT	43
E3R-22C + E15I-43C	6	<b>PETROL &amp; DIESEL FIRE FIGHTERS</b>	<b>44</b>
E15R-43C	7	PORTABLE + SKID FIRE FIGHTERS	45
E3R-22H + E5R-30H + E10R-36H	8	TRAILER FIRE FIGHTERS	45
<b>PETROL PORTABLE BLASTERS</b>	<b>9</b>	<b>HOT BOXES</b>	<b>46</b>
P6I-17C + P6R-17C	10	AC HOT BOX + DC HOT BOX	47
P13C-36C + P13I-36C + P13R-36C	11	<b>SPECIALISED BUILDS</b>	<b>48</b>
P13R-36H	12	P27R-43C + P13R-36C-RSC	49
P20I-43C + P20R-43C	13	<b>CUSTOM BUILDS</b>	<b>50</b>
P20I-50C + P20R-50C	14	<b>HOSE REELS</b>	<b>60</b>
<b>PETROL TRAILER &amp; SKID BLASTERS</b>	<b>15</b>	SMALL HOSE REELS	61
P20R-43C-BB + P20R-43H-BB + SKID	16	BARE REMOTE REELS - STANDARD	62
P13R-36C-T + P20R-43C-T	17	COMPLETE REMOTE REELS	63
P20R-43C-TD + P20R-43H-TD	18	<b>SPARE PARTS &amp; ACCESSORIES</b>	<b>64</b>
<b>DIESEL PORTABLE BLASTERS</b>	<b>19</b>	EZY FOAM	65
D10I-36C + D10R-36C + D10M-36C	20	HIGH PRESSURE HOSE	66
D24M-43C + D24M-50C	21	ROTARY SURFACE CLEANERS	67
<b>DIESEL TRAILER &amp; SKID BLASTERS</b>	<b>22</b>	HIGH PRESSURE GUNS	69
D10M-36C-SKID + D10M-36C-BB	23	COMPLETE GUNS	70
D10M-36H-SKID + D10M-36H-BB	24	LANCES	71
D24R-43H-SKID	25	NOZZLE SIZE CALCULATOR	72
D24M-43H-SKID	26	SPRAY NOZZLES / JETS	73
D50M-72C-SKID	27	TURBO NOZZLES + REPAIR KITS	75
D10M-36C-TD + D10M-36C-T	28	LANCE NOZZLE HOLDERS	76
D10M-36H-TD + D10M-36H-T	29	TELESCOPIC LANCES	77
D10M-36C-TD + D10M-36C-TDP	30	LANCE ATTACHMENTS	78
D10M-36H-TD + D10M-36H-TDP	31	BY-PASS VALVES	79
D24M-50C-TD	32	SAFETY VALVES	81
D24M-50H-TD + D24M-50H-TDP	33	HOSE & REEL SWIVELS	82
<b>ELECTRIC WASH-BAY BLASTERS</b>	<b>34</b>	QUICK CONNECT FITTINGS	83
WASHMATE 3R-22C (OLD WM10)	35	BSP HIGH PRESSURE FITTINGS	87
WASHMATE 10R-30C (OLD WM1)	35	STAINLESS STEEL HOSE CLAMPS	89
WASHMATE 15R-43C (OLD WM3)	36	WATER FILTERS	90
WASHMATE 10R-36H (OLD WM15)	36	FLOAT SWITCHES	91
WASHMATE 15M-43C (OLD WM4)	37	ELECTRICAL SPARES	92
WASHMATE 15M-43H (OLD WM5)	37	WHIPSOCK	94
<b>UNDER BODY WHEEL WASH</b>	<b>38</b>	SPARE PARTS	95
WASHMATE 32R-8.5C-WW	39	BOILERS	96
<b>ULTRA HIGH PRESSURE BLASTERS</b>	<b>40</b>	FLAT FREE WHEELS	101
D160M-360C	41	HONDA ENGINE PARTS	102
		KOHLER & YANMAR ENGINE PARTS	103
		REDUCTION GEAR BOX	104
		<b>HAWK PUMPS &amp; SPARES</b>	<b>105</b>

## TABLE OF CONTENTS



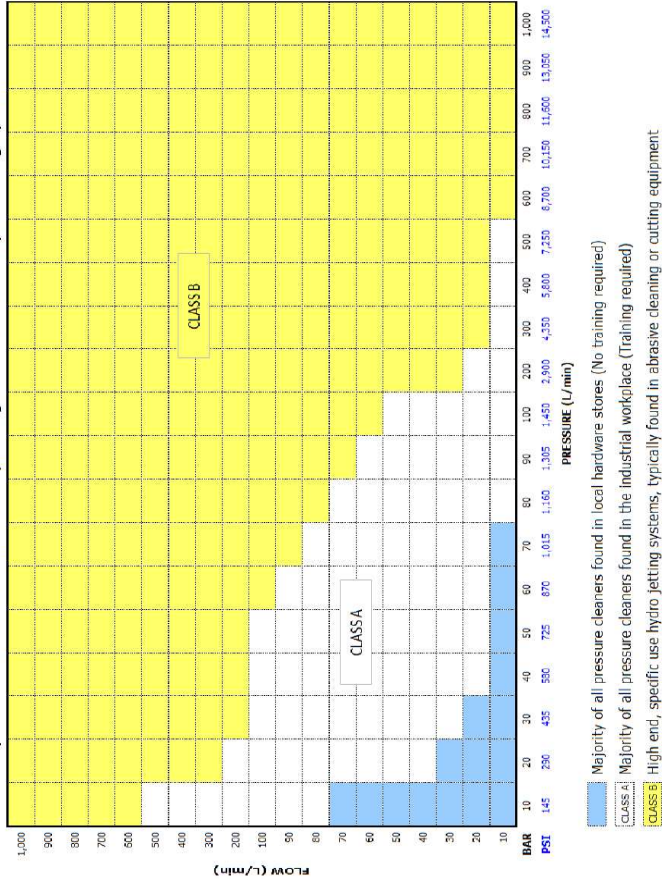
## TRAINING

Training is required under AS/NZ 4233.1 for any person undertaking work with a Class A or Class B hydro jetting system. The majority of all pressure cleaners within the industrial workplace fall within Class A, as can be seen from the graph.

We have released an online training platform, **free of charge** to all of our customers, which provides the necessary training for Class A systems, and as it is online, it can be accessed using any web connected device (smartphone, tablet or PC).

If you have not yet received Class A training, please visit [www.training.thoroughclean.com.au](http://www.training.thoroughclean.com.au) and register or contact us to find out about our class room training options for Class B training.

Operators must be trained before Operating Class A & Class B Hydro Jetting Systems



# ELECTRIC PORTABLE BLASTERS



## TYPICAL USERS

- 4WD Enthusiasts
- Mechanics
- Car Detailers
- Transport Companies
- Butchers
- Anywhere with 240V or 415V electricity

**THOROUGHCLEAN**  
WATER BLASTERS Over-engineered — On purpose

# COLD ELECTRIC

## E3R-22C

**RANGE** Rental Spec.  
**ELECTRIC** 3 HP (2.2kW) 240 Volt – Cold  
 1100 PSI @ 10 Amp draw or  
 1500 PSI @ 13 Amp draw  
 11 LPM Flow – (2200 PSI pump)

### MOTOR AND PUMP

- Italian Heavy Duty, class 'H' wound, single-phase electric motor
- **HAWK** Triplex Pump HD1115 with brass head & ceramic pistons
- Low speed pump at 1450 RPM

### FRAME

- Fully hot dipped galvanised steel frame

### SUPPLY AND DELIVERY

- Large frame mounted industrial water filter
- 20m double wire HP hose
- Soft acting, frame mounted by-pass valve
- Thermoshield auto water dump valve
- Stainless steel lance with professional gun
- Size: 62 x 52 x 54 (cm)
- Weight: 58kg



## E15I-43C

**RANGE** Industrial Spec.  
**ELECTRIC** 15 HP (11kW) 415 Volt – Cold  
 3000 @ 19 Amp draw  
 18 LPM Flow – (4350 PSI pump)

### MOTOR AND PUMP

- Italian Heavy Duty, class 'F' wound, three-phase electric motor
- **HAWK** XLT1830 Triplex Pump with brass head & ceramic pistons
- Low speed pump at 1450 RPM
- DOL motor starter, in stainless steel control box
- Timed shutdown

### FRAME

- Fully hot dipped galvanised steel frame
- Extra-large 'flat free' wheels for easy rolling over uneven surfaces

### SUPPLY AND DELIVERY

- Large frame mounted industrial water filter
- Pneumatic accumulator to prevent pressure spikes & water hammering
- 20m double wire HP hose
- Soft acting, frame mounted by-pass valve
- Thermoshield auto water dump valve
- Stainless steel lance with professional gun
- Size: 95 x 80 x 80 (cm)
- Weight: 160kg



# COLD ELECTRIC

## E15R-43C

**RANGE** Rental Spec.  
**ELECTRIC** 15 HP (11kW) 415 Volt – Cold  
 3000 @ 19 Amp draw  
 18 LPM Flow – (4350 PSI pump)

### MOTOR AND PUMP

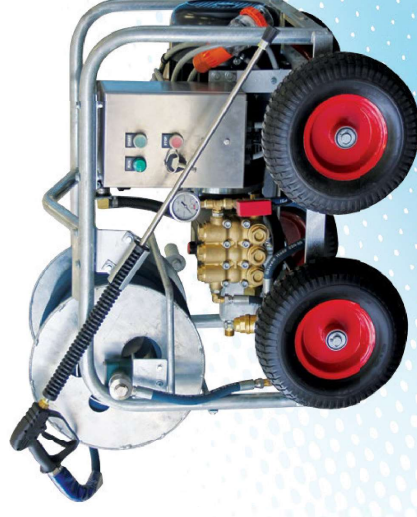
- Italian Heavy Duty, class 'F' wound, three-phase electric motor
- **HAWK** XLT1830 Triplex Pump with brass head & ceramic pistons
- Low speed pump at 1450 RPM
- DOL motor starter, in stainless steel control box
- Timed shutdown
- **LubeBuddy** - An extra oil tank to keep pump well lubricated

### FRAME

- Fully hot dipped galvanised steel frame
- Extra-large 'flat free' wheels for easy rolling over uneven surfaces

### SUPPLY AND DELIVERY

- Large frame mounted industrial water filter
- Pneumatic accumulator to prevent pressure spikes & water hammering
- 20m double wire HP hose
- Soft acting, frame mounted by-pass valve
- Thermoshield auto water dump valve
- Stainless steel lance with professional gun
- **AquaTech** - A pressurised break tank, fitted with low water level auto shutdown
- Built-in heavy duty, galvanised hose reel with 30m double wire HP hose
- Size: 95 x 80 x 80 (cm)
- Weight: 180kg



# ELECTRIC PORTABLE BLASTERS



# HOT WATER ELECTRIC

## E3R-22H



RANGE Rental Spec.

**ELECTRIC** 3 HP [2.2kW] 240 Volt – **Hot**  
**1000 PSI** @ 10 Amp draw  
**10 LPM** Flow – (2200 PSI pump)

### MOTOR AND PUMP

- Italian Heavy Duty, class 'H' wound, single-phase electric motor
- **HAWK** NHD1015 Triplex Pump with brass head & ceramic pistons
- Low speed pump at 1450 RPM
- **LubeBuddy** - An extra oil tank to keep pump well lubricated

### FRAME

- Fully hot dipped galvanised steel frame
- Extra-large 'flat free' wheels for easy rolling over uneven surfaces

### BOILER / BURNER

- Heavy duty horizontal diesel boiler, set to 70°C

### SUPPLY AND DELIVERY

- Extra large frame mounted industrial water filter
- **AquaTech** - A stainless steel water break tank, fitted with low water level auto shutdown
- Built-in heavy duty, galvanised hose reel with 30m double wire HP hose
- Soft acting, frame mounted bypass valve
- Thermoshield auto water dump valve
- Stainless steel lance with professional gun
- Size: 130 x 85 x 105 (cm)
- Weight: 270kg



## E5R-30H



RANGE Rental Spec.

**ELECTRIC** 5.5 HP [4kW] 415 Volt – **Hot**  
**2300 PSI** @ 8 Amp draw  
**12.5 LPM** Flow – (3000 PSI pump)

Same features as the E3R-22H but with a larger motor and pump

- Italian Heavy Duty, class 'H' wound, three-phase electric motor
- **HAWK** NMT1220 Triplex Pump with brass head & ceramic pistons
- Size: 130 x 85 x 105 (cm)
- Weight: 280kg

## E10R-36H



RANGE Rental Spec.

**ELECTRIC** 10 HP [7.5kW] 415 Volt – **Hot**  
**2800 PSI** @ 13 Amp draw  
**18 LPM** Flow – (3625 PSI pump)

Same features as the E3R-30H but with a larger motor and pump

- Italian Heavy Duty, class 'H' wound, three-phase electric motor
- **HAWK** NMT1825 Triplex Pump with brass head & ceramic pistons
- Size: 130 x 85 x 105 (cm)
- Weight: 310kg

# PETROL PORTABLE BLASTERS



### TYPICAL USERS

- Boat Yards / Slipways / Port Authorities
- Cleaning Contractors
- Rental Companies
- Car Yards
- Roof Cleaners
- Anywhere outdoors where electricity sources are not readily available and diesel is not required. (Cheaper than diesel units)

**THOROUGHCLEAN**  
**WATER BLASTERS** Over-engineered — On purpose

# COLD PETROL 6 HP

## P6I-17C

RANGE Rental Spec.  
HONDA PETROL 6.5 HP Class – Recoil Start – Cold  
2000 PSI (1750 PSI pump)  
12 LPM Flow

### ENGINE AND PUMP

- Genuine Honda GX200 recoil start engine
- HAWK** NHD1215 Triplex Pump with brass head & ceramic pistons
- Low speed pump at 1450 RPM with 2:1 gearbox

### FRAME

- Fully hot dipped galvanised steel frame

### SUPPLY AND DELIVERY

- Large frame mounted industrial water filter
- 20m double wire HP hose
- Soft acting, frame mounted bypass valve
- Thermoshield auto water dump valve
- Stainless steel lance with professional gun
- Size: 62 x 59 x 54 (cm)
- Weight: 58kg



## P6R-17C

RANGE Rental Spec.  
HONDA PETROL 6.5 HP Class – Recoil Start – Cold  
2000 PSI (1750 PSI pump)  
12 LPM Flow

### ENGINE AND PUMP

- Genuine Honda GX200 recoil start engine
- HAWK** NHD1215 Triplex Pump with brass head & ceramic pistons
- Low speed pump at 1450 RPM with 2:1 gearbox

### FRAME

- Fully hot dipped galvanised steel frame

### SUPPLY AND DELIVERY

- Large frame mounted industrial water filter
- 20m double wire HP hose
- Soft acting, frame mounted bypass valve
- Thermoshield auto water dump valve
- Stainless steel lance with professional gun
- Size: 62 x 59 x 54 (cm)
- Weight: 58kg



# COLD PETROL 13 HP

3 Models Available

## P13C-36C

RANGE Commercial Spec.  
HONDA PETROL 13 HP Class – Recoil Start – Cold  
3500 PSI (3625 PSI pump)  
17 LPM Flow

### ENGINE AND PUMP

- Genuine Honda GX390 recoil start engine
- HAWK** NPM1725 Triplex Pump with brass head & ceramic pistons
- Direct Drive, high speed pump

### FRAME

- Fully hot dipped galvanised steel frame
- Extra-large 'flat free' wheels for easy rolling over uneven surfaces

### SUPPLY AND DELIVERY

- Frame mounted industrial water filter
- 20m double wire HP hose
- HAWK** VBA bypass valve
- Thermoshield auto water dump valve
- Stainless steel lance with professional gun
- Size: 95 x 80 x 80 (cm)
- Weight: 115kg



## P13I-36C

RANGE Industrial Spec.  
HONDA PETROL 13 HP Class – Recoil Start – Cold  
3000 PSI (3625 PSI pump)  
18 LPM Flow

Same as the P13C-36C with the following differences

- HAWK** NPM1825 Triplex Pump with brass head & ceramic pistons
- Low speed pump at 1450 RPM with 2:1 gearbox
- Soft acting, frame mounted bypass valve
- Size: 95 x 80 x 80 (cm)
- Weight: 120kg



## P13R-36C

RANGE Rental Spec.  
HONDA PETROL 13 HP Class – Recoil Start – Cold  
3000 PSI (3625 PSI pump)  
18 LPM Flow

Same machine as the P13I-36C with the following added features

- LubeBuddy** - An extra oil tank to keep pump well lubricated
- AquaTech** - A pressurised break tank, fitted with low water level auto shutdown
- Built-in heavy duty, galvanised hose reel with 30m double wire HP hose
- Size: 95 x 80 x 80 (cm)
- Weight: 148kg



Electric Start Model Also Available

# PETROL PORTABLE BLASTERS



# Featured Machine

## HOT PETROL 13 HP

### P13R-36H

RANGE Rental Spec.  
**HONDA PETROL** 13 HP Class – Electric Start – **Hot**  
**3000 PSI** (3625 PSI pump)  
 18 LPM Flow

#### ENGINE AND PUMP

- Genuine Honda GX390 electric start engine
- **HAWK** NPM1825 Triplex Pump with brass head & ceramic pistons
- Low speed pump at 1450 RPM with 2:1 gearbox
- **LubeBuddy** - An extra oil tank to keep pump well lubricated

#### FRAME

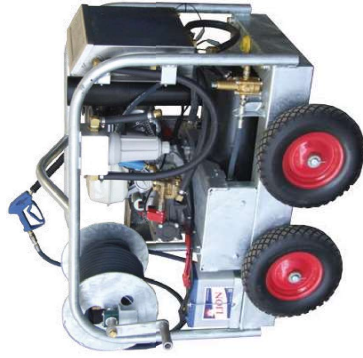
- Fully hot dipped galvanised steel frame
- Stainless steel 23 litre fuel tank
- Extra-large 'flat free' wheels for easy rolling over uneven surfaces

#### BOILER / BURNER

- Heavy duty horizontal diesel boiler, set to 70°C

#### SUPPLY AND DELIVERY

- Extra large frame mounted industrial water filler
- Built-in heavy duty, galvanised hose reel with 30m double wire HP hose
- **AquaTech** - A stainless steel water break tank, fitted with low water level auto shutdown
- Soft acting, frame mounted by-pass valve
- Stainless steel lance with professional gun
- Size: 135 x 85 x 110 (cm)
- Weight: 350kg



## COLD PETROL 20 HP (4350 PSI PUMP)

2 Models Available

### P20I-43C

RANGE Industrial Spec.  
**HONDA PETROL** 20 HP Class Electric Start – Cold  
**3500 PSI** (4350 PSI pump)  
 18 LPM Flow

#### ENGINE AND PUMP

- Genuine Honda Vwin GX630 electric start engine
- **HAWK** XLT2230 Triplex Pump with brass head & ceramic pistons
- Low speed pump at 1450 RPM with 2:1 gearbox

#### FRAME

- Fully hot dipped galvanised steel frame
- Stainless steel 23 litre fuel tank
- Extra-large 'flat free' wheels for easy rolling over uneven surfaces

#### SUPPLY AND DELIVERY

- Extra large frame mounted industrial water filler
- 20m double wire HP hose
- Soft acting, frame mounted by-pass valve
- Thermoshield auto water dump valve
- Stainless steel lance with professional gun
- Size: 125 x 85 x 95 (cm)
- Weight: 160kg



### P20R-43C

RANGE Rental Spec.  
**HONDA PETROL** 20 HP Class Electric Start – Cold  
**3500 PSI** (4350 PSI pump)  
 18 LPM Flow

Same machine as the P20I-43C with the following added features

- **LubeBuddy** - An extra oil tank to keep pump well lubricated
- **AquaTech** - A stainless steel water break tank, fitted with low water level auto shutdown
- Built-in heavy duty, galvanised hose reel with 30m double wire HP hose
- Size: 125 x 85 x 95 (cm)
- Weight: 187kg



## PETROL PORTABLE BLASTERS

## COLD PETROL 20 HP (5000 PSI PUMP)

2 Models Available

### P20I-50C

#### ENGINE AND PUMP

- Genuine Honda Vwin GX690 electric start engine
- **HAWK** PX1735 Triplex Pump with brass head & ceramic pistons
- Low speed pump at 1450 RPM with 2:1 gearbox

#### FRAME

- Fully hot dipped galvanised steel frame
- Stainless steel 23 litre fuel tank
- Extra-large 'flat free' wheels for easy rolling over uneven surfaces

#### SUPPLY AND DELIVERY

- Extra large frame mounted industrial water filter
- 20m double wire HP hose
- Soft acting, frame mounted bypass valve
- Thermoshield auto water dump valve
- Stainless steel lance with professional gun
- Size: 106 x 80 x 83 (cm)
- Weight: 160kg



### P20R-50C

RANGE Rental Spec.  
HONDA PETROL 20 HP Class Electric Start – Cold  
4500 – 5000 PSI (5000 PSI pump)  
17 LPM Flow

Same machine as the P20I-50C with the following added features

- **LubeBuddy** - An extra oil tank to keep pump well lubricated
- **AquaTech** - A stainless steel water break tank, fitted with low water level auto shutdown
- Built-in heavy duty, galvanised hose reel with 30m double wire HP hose
- Size: 125 x 85 x 95 (cm)
- Weight: 187kg



**CLASS B SAFETY EQUIPMENT AND TRAINING ARE A REQUIREMENT FOR THESE MODELS**



# PETROL TRAILER & SKID BLASTERS



#### TYPICAL USERS

- Rental Companies
- Cleaning Contractors
- Roof Cleaners
- Painting Contractors
- Drain Cleaners
- Council Street / Parking Lot Cleaning
- Any mobile cleaning applications, where diesel is not required

**THOROUGHCLEAN**  
WATER BLASTERS Over-engineered — On purpose



# PETROL SKID 20 HP

## P20R-43C-BB

RANGE Rental Spec.  
HONDA PETROL 20 HP Class – Electric Start – Cold  
3500 PSI (4350 PSI pump)  
22 LPM Flow

### ENGINE AND PUMP

- Genuine Honda Vwvin GX630 electric start engine
- HAWK** XLT2230 Triplex Pump with brass head & ceramic pistons
- Low speed pump at 1450 RPM with 2:1 gearbox

### FRAME

- Fully hot dipped galvanised steel frame, forkliftable
- Stainless steel 23 litre fuel tank
- Engine vibration mounted on separate sub-frame
- 1000 litre, white IBC water tank
- Four AS certified D-shackle lifting lugs

### SUPPLY AND DELIVERY

- Soft acting, frame mounted by-pass valve
- Heavy duty, galvanised hose reel with 30m double wire HP hose
- Size: 220 x 130 x 138 (cm)
- Weight: 350kg



## P20R-43H-BB

RANGE Rental Spec.  
HONDA PETROL 20 HP Class Electric Start – **Hot**  
3500 PSI (4350 PSI pump)  
22 LPM Flow

Same machine as the P20R-43C-BB with the following added features

- Vertical boiler with ½" mild steel coils, set to 70°C
- Size: 220 x 130 x 138 (cm)
- Weight: 623kg



## P20R-43H-SKID

RANGE Rental Spec.  
HONDA PETROL 20 HP Class Electric Start – **Hot**  
3500 PSI (4350 PSI pump)  
22 LPM Flow

### ENGINE AND PUMP

- Genuine Honda Vwvin GX630 electric start engine
- HAWK** XLT2230 Triplex Pump with brass head & ceramic pistons
- Low speed pump at 1450 RPM with 2:1 gearbox

### FRAME

- Fully hot dipped galvanised steel frame, forkliftable
- Stainless steel 23 litre fuel tank
- Engine vibration mounted on separate sub-frame
- Vertical boiler with ½" mild steel coils, set to 70°C

### SUPPLY AND DELIVERY

- Size: 133 x 71 x 146 (cm)
- Weight: 335kg



# COLD PETROL IBC TRAILER

2 Models Available

## P13R-36C-T

RANGE Rental Spec.  
HONDA PETROL 13 HP Class – Recoil Start – Cold  
3000 PSI (3625 PSI pump)  
18 LPM Flow

### ENGINE AND PUMP

- Genuine Honda GX390 recoil start engine
- HAWK** NPM1825 Triplex Pump with brass head & ceramic pistons
- Low speed pump at 1450 RPM with 2:1 gearbox
- LubeBuddy* - An extra oil tank to keep pump well lubricated

### FRAME

- Heavy Duty 4x4 style, fully hot dipped galvanised trailer
- Land Cruiser style wheels on 2-ton axle with spare wheel
- Mechanical disc brakes with manual hand brake
- LED side clearance lights
- Engine vibration mounted on separate sub-frame
- 1000 litre, white IBC water tank

### SUPPLY AND DELIVERY

- Double water intake to pump with dual fillers
- Fitted with low water level auto shutdown
- Heavy duty, galvanised hose reel with 30m double wire HP hose
- Soft acting, frame mounted by-pass valve
- Stainless steel lance with professional gun
- Size: 360 x 185 x 180 (cm)
- Weight: 600kg



## P20R-43C-T

RANGE Rental Spec.  
HONDA PETROL 20 HP Class – Electric Start – Cold  
3500 PSI (4350 PSI pump)  
22 LPM Flow

Same features as the P13R-36C-T with the following differences

- Genuine Honda Vwvin GX630 electric start engine
- HAWK** XLT2230 Triplex Pump with brass head & ceramic pistons
- Stainless steel fuel tank (23 litres)
- Size: 360 x 185 x 180 (cm)
- Weight: 600kg



## PETROL POLY TRAILER 20 HP

2 Models Available

### P20R-43C-TO

RANGE Rental Spec.  
HONDA PETROL 20 HP Class – Electric Start – Cold  
3500 PSI [4350 PSI pump]  
22 LPM Flow

#### ENGINE AND PUMP

- Genuine Honda Vtwin GX630 electric start engine
- **HAWK** XLT2230 Triplex Pump with brass head & ceramic pistons
- Low speed pump at 1450 RPM with 2:1 gearbox
- **LubeBuddy** - An extra oil tank to keep pump well lubricated



#### FRAME

- Heavy Duty 4x4 style, fully hot dipped galvanised trailer
- Land Cruiser style wheels on 2-ton axle with spare wheel
- Mechanical disc brakes with manual hand brake
- LED side clearance lights
- Engine vibration mounted on separate sub-frame
- Stainless steel fuel tank (23 litres)
- 1000 litre, red poly water tank



#### SUPPLY AND DELIVERY

- Double water intake to pump with dual filters
- Fitted with low water level auto shutdown
- Heavy duty, galvanised hose reel with 30m double wire HP hose
- Soft acting, frame mounted by-pass valve
- Stainless steel lance with professional gun
- Size: 410 x 185 x 180 (cm)
- Weight: 700kg

### P20R-43H-TO

RANGE Rental Spec.  
HONDA PETROL 20 HP Class – Electric Start – **Hot**  
3500 PSI [4350 PSI pump]  
22 LPM Flow



- Vertical boiler with ½" mild steel coils, set to 70°C
- Size: 410 x 185 x 180 (cm)
- Weight: 750kg

Popular Alternative to the Hot Water Diesel Trailer

# DIESEL PORTABLE BLASTERS



#### TYPICAL USERS

- Construction Sites
- Equipment Cleaning
- Rental Companies
- Cleaning Contractors
- Painting Contractors
- Mine Sites (for models fitted with Mine Spec features)
- Any outdoor application where the durability of a diesel engine is required.
- Applications where alternative fuel sources are limited, such as in-service cleaning of road working equipment.

**THOROUGHCLEAN**  
WATER BLASTERS *Over-engineered — On purpose*



# COLD DIESEL 10 HP

## D10I-36C



RANGE Industrial Spec.  
YANMAR DIESEL 10 HP – Electric Start – Cold  
3000 PSI (3625 PSI pump)  
15 LPM Flow

### ENGINE AND PUMP

- Yanmar 10HP electric start air-cooled diesel engine
- **HAWK** NPM152SR Triplex Pump with brass head & ceramic pistons
- Low speed pump at 1450 RPM with 2:1 gearbox

### FRAME

- Fully hot dipped galvanised steel frame
- 'flat free' wheels for easy rolling over uneven surfaces

### SUPPLY AND DELIVERY

- 20m double wire HP hose
- Soft acting, frame mounted bypass valve
- Thermoshield auto water dump valve
- Stainless steel lance with professional gun
- Size: 95 x 80 x 80 (cm)
- Weight: 137kg



## D10R-36C



RANGE Rental Spec.  
YANMAR DIESEL 10 HP – Electric Start – Cold  
3000 PSI (3625 PSI pump)  
15 LPM Flow

Same machine as the D10I-36C with the following added features

- Stainless steel control box with:
  - Push to start button
  - Hour meter
  - E-Stop

- **LubeBuddy** - An extra oil tank to keep pump well lubricated
- **AquaTech** - A pressurised break tank, fitted with low water level auto shutdown
- Built-in heavy duty, galvanised hose reel with 30m double wire HP hose
- Size: 95 x 80 x 80 (cm)
- Weight: 185kg



## D10M-36C



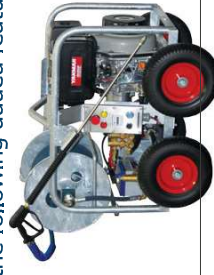
RANGE Mine Spec.  
YANMAR DIESEL 10 HP – Electric Start – Cold  
3000 PSI (3625 PSI pump)  
15 LPM Flow

Same machine as the D10R-36C with the following added features

- **MINE Spec Compliant**
- Size: 95 x 80 x 80 (cm)
- Weight: 190kg

### MINE SPEC FEATURES:

- Exhaust spark arrestor
- Engine drip tray
- Lockable battery isolator
- Covered battery terminals



# COLD DIESEL 24 HP (MINE SPEC)

2 Models Available

## D24M-43C

RANGE Mine Spec.  
KOHLER DIESEL 24 HP – Electric Start – Cold  
3400 PSI (4350 PSI pump)  
22 LPM Flow

### ENGINE AND PUMP

- Kohler 24 HP electric start air-cooled diesel engine
- **HAWK** XT2230 Triplex Pump with brass head & ceramic pistons
- Low speed pump at 1450 RPM with 2:1 gearbox
- **LubeBuddy** - An extra oil tank to keep pump well lubricated

### FRAME

- Fully hot dipped galvanised steel frame
- Engine vibration mounted on separate sub-frame
- Stainless steel control box with hour meter & E-stop
- Extra-large 'flat free' wheels for easy rolling over uneven surfaces

### SUPPLY AND DELIVERY

- Extra-large industrial water filter
- Stainless steel water break tank, fitted with low water level auto shutdown
- Heavy duty, galvanised hose reel with 30m double wire HP hose
- Soft acting, frame mounted bypass valve
- Stainless steel lance with professional gun
- **MINE Spec Compliant**
- Size: 125 x 85 x 95 (cm)
- Weight: 330kg



### MINE SPEC FEATURES:

- Emergency-stop
- Exhaust spark arrestor
- Engine drip tray
- Lockable battery isolator
- Covered battery terminals
- Double wire insulation

## D24M-50C



RANGE Mine Spec.  
KOHLER DIESEL 24 HP – Electric Start – Cold  
4500 – 5000 PSI (5000 PSI pump)  
21 LPM Flow

Same features as the D24M-43C with the following differences

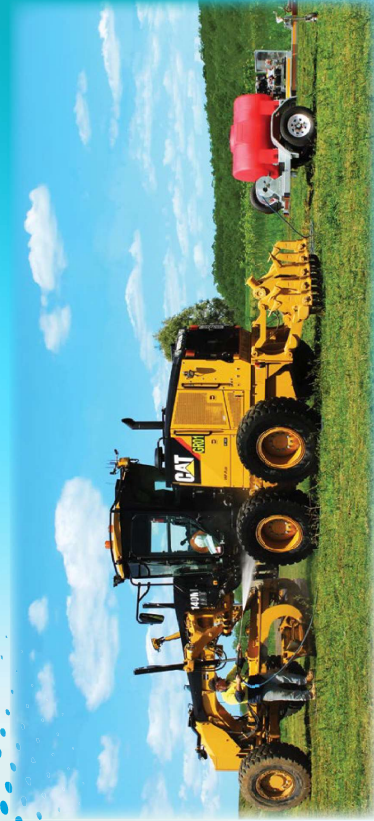
- **HAWK** PX2135 Triplex Pump with brass head & ceramic pistons
- Higher rated fittings and components to handle the high pressures.
- Size: 125 x 85 x 95 (cm)
- Weight: 270kg

CLASS B SAFETY EQUIPMENT AND TRAINING ARE A REQUIREMENT FOR THIS UNIT



Non Mine Spec Versions Available for Both Models

# DIESEL TRAILER & SKID BLASTERS



## TYPICAL USERS

- Iron Mines
- Gold Mines
- Coal Mines (Non Ex Environments)
- Anywhere that doesn't allow the use of petrol engines.

## TYPICAL MINE SPEC FEATURES

- Emergency-Stop
  - Engine Drip Tray
  - Exhaust Spark Arrestor
  - Double Wire Insulation
- ON TRAILERS**
- High Vis Tape
  - Painted Draw Bar
  - Wheel Nut Indicators
  - And Many More

**THOROUGHCLEAN**

*WATER BLASTERS Over-engineered — On purpose*

## COLD DIESEL 10 HP (MINE SPEC SKID)

2 Models Available

### D10M-36C-SKID

RANGE Mine Spec.  
**YANMAR DIESEL** 10 HP – Electric Start – Cold  
3000 PSI (362.5 PSI pump)  
15 LPM Flow

#### ENGINE AND PUMP

- Yanmar 10 HP electric start air-cooled diesel engine
- **HAWK** NPM152SR Triplex Pump with brass head & ceramic pistons
- Low speed pump at 1450 RPM with 2:1 gearbox
- **LubeBuddy** - An extra oil tank to keep pump well lubricated

#### FRAME

- Fully hot dipped galvanised steel frame, fork-liftable
- Engine vibration mounted on separate sub-frame
- Stainless steel control box with hour meter & E-stop

#### SUPPLY AND DELIVERY

- Extra-large industrial water filter
- Stainless steel water break tank, fitted with low water level auto shutdown
- Heavy duty, galvanised hose reel with 30m double wire HP hose
- Self acting, frame mounted bypass valve
- Stainless steel lance with professional gun

#### MINE Spec Compliant

- Size: 125 x 85 x 80 (cm)
- Weight: 220kg

#### MINE SPEC FEATURES:

- Emergency-stop
- Exhaust spark arrestor
- Engine drip tray
- Lockable battery isolator
- Covered battery terminals
- Double wire insulation



### D10M-36C-BB

RANGE Mine Spec.  
**YANMAR DIESEL** 10 HP – Electric Start – Cold  
3000 PSI (362.5 PSI pump)  
15 LPM Flow

Same machine as the D10M-36C-SKID with the following differences

- 1000 litre, white IBC water tank
- Four AS certified D-shackle lifting lugs
- Double water intake to pump with dual filters
- Size: 220 x 130 x 138 (cm)
- Weight: 350kg

#### ADDITIONAL MINE SPEC FEATURES:

- 2kg Fire extinguisher
- High Vis tape all round
- Starter motor isolator
- Anderson type jump-start receptacle
- Certified lifting lugs



**DIESEL TRAILER & SKID BLASTERS**



## HOT DIESEL 10 HP (MINE SPEC SKID)

2 Models Available

### D10M-36H-SKID

RANGE Mine Spec.

**YANMAR DIESEL 10 HP** – Electric Start – **Hot**  
2600 - 3000 PSI (3625 PSI pump)  
15 LPM Flow



#### ENGINE AND PUMP

- Yanmar 10 HP electric start air-cooled diesel engine
- **HAWK** NPM1523R Triplex Pump with brass head & ceramic pistons
- Low speed pump at 1450 RPM with 2:1 gearbox
- **LubeBuddy** - An extra oil tank to keep pump well lubricated



#### BOILER / BURNER

- Vertical boiler with ½" mild steel coils, set to **70°C**

#### FRAME

- Fully hot dipped galvanised steel frame, forkliftable
- Engine vibration mounted on separate sub-frame
- Stainless steel fuel tank to boiler (23 litres)
- Stainless steel control box with hour meter & E-stop

#### SUPPLY AND DELIVERY

- Extra-large industrial water filter
- Stainless steel water break tank, fitted with low water level auto shutdown
- Heavy duty, galvanised hose reel with 30m double wire HP hose
- Soft acting, frame mounted bypass valve
- Stainless steel lance with professional gun
- **MINE Spec Compliant**
- Size: 133 x 71 x 146 (cm)
- Weight: 335kg

Non Mine Spec Version Also Available

### D10M-36H-BB

RANGE Mine Spec.

**YANMAR DIESEL 10 HP** – Electric Start – **Hot**  
2600 - 3000 PSI (3625 PSI pump)  
15 LPM Flow



Same machine as the D10M-36H-SKID with the following differences

- 1000 litre, white IBC water tank
- Four AS certified D-shackle lifting lugs
- Double water intake to pump with dual filters
- Size: 220 x 130 x 138 (cm)
- Weight: 350kg

#### ADDITIONAL MINE SPEC FEATURES:

- 2kg Fire extinguisher
- Engine drip tray
- High Vis tape all round
- Certified lifting lugs

## HOT DIESEL 24 HP (NON MINE SPEC SKID)

### D24R-43H-SKID

RANGE Rental Spec.

**KOHLER DIESEL 24 HP** Class – Electric Start – **Hot**  
3000 - 3600 PSI (4350 PSI pump)  
22 LPM Flow



#### ENGINE AND PUMP

- Kohler 24 HP electric start air-cooled diesel engine
- **HAWK** XT2230 Triplex Pump with brass head & ceramic pistons
- Low speed pump at 1450 RPM with 2:1 gearbox
- **LubeBuddy** - An extra oil tank to keep pump well lubricated

#### BOILER / BURNER

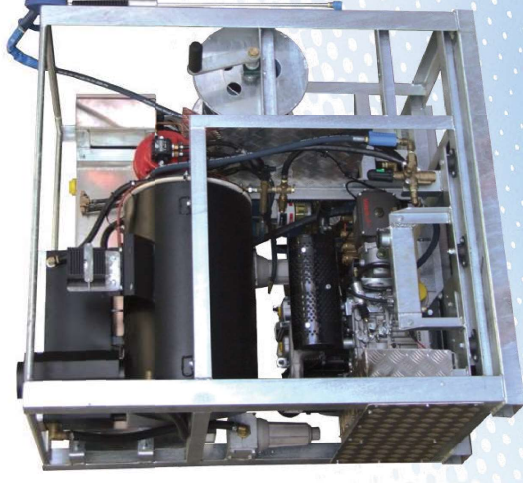
- **Super heavy duty** horizontal boiler with ½" mild steel coils, set to **70°C**

#### FRAME

- Fully hot dipped galvanised steel frame, forkliftable
- Engine is vibration mounted on separate sub-frame
- Stainless steel control box with hour meter & E-stop
- 90 litre stainless steel fuel tank supplies engine & boiler

#### SUPPLY AND DELIVERY

- Extra-large industrial water filter
- Stainless steel water break tank, fitted with low water level auto shutdown
- Heavy duty, galvanised hose reel with 30m double wire HP hose
- Thermoshield auto water dump valve
- Soft acting, frame mounted bypass valve
- Stainless steel lance with professional gun
- Size: 140 x 85 x 150 (cm)
- Weight: 535kg



## HOT DIESEL 24 HP (MINE SPEC SKID)

### D24M-43H-SKID

RANGE Mine Spec.  
PERKINS DIESEL 24 HP Class – Electric Start – **Hot**  
3000 - 3600 PSI (4350 PSI pump)  
22 LPM Flow

#### ENGINE AND PUMP

- Perkins 24 HP Class electric start water-cooled diesel engine
- HAWK** XT2230 Triplex Pump with brass head & ceramic pistons
- Low speed pump at 1450 RPM with 2:1 gearbox
- LubeBuddy** - An extra oil tank to keep pump well lubricated

#### BOILER / BURNER

- Super heavy duty** horizontal boiler with ½" mild steel coils, set to 70°C

#### FRAME

- Fully hot dipped galvanised steel frame, fork-liftable
- Engine is vibration mounted on separate sub-frame
- Stainless steel control box with hour meter & E-stop
- 90 litre (12-hr) Galvanised fuel tank supplies engine & boiler

#### SUPPLY AND DELIVERY

- Extra-large industrial water filler
- Stainless steel water break tank, fitted with low water level auto shutdown
- Pneumatic accumulator to prevent pressure spikes & water hammering
- Heavy duty, galvanised hose reel with 30m double wire HP hose
- Thermoshield auto water dump valve
- Soft acting, frame mounted bypass valve
- Stainless steel lance with professional gun
- MINE Spec Compliant**
- Size: 120 x 120 x 140 (cm)
- Weight: 720kg



**SUPER  
HEAVY  
DUTY**



#### AUTOMATIC ENGINE

##### SHUT-DOWNS:

- Low water supply
- Low oil to pump
- Pump oil over temp
- Low fuel

##### MINE SPEC FEATURES:

- Emergency-stop
- Exhaust spark arrestor
- Lockable battery isolator
- Covered battery terminals
- Double wire insulation

## COLD DIESEL 50 HP (MINE SPEC SKID)

### D50M-72C-SKID

RANGE Mine Spec.  
PERKINS DIESEL 50 HP Class – Electric Start – **Cold**  
7000 PSI (7250 PSI pump)  
30 LPM Flow

#### ENGINE AND PUMP

- Perkins 50 HP Class electric start water-cooled diesel engine
- Other engines available for this model.
- HAWK** HHP30 Triplex Pump with brass head & ceramic pistons
- Low speed pump at 1000 RPM, belt driven
- LubeBuddy** - An extra oil tank to keep pump well lubricated

#### FRAME

- Fully hot dipped galvanised steel frame, fork-liftable
- Engine is vibration mounted on separate sub-frame
- Stainless steel control box with hour meter & E-stop
- 90 litre (12-hr) Galvanised fuel tank supplies engine

#### SUPPLY AND DELIVERY

- Extra-large industrial water filter
- Twin stainless steel water break tank, fitted with low water level auto shutdown
- Heavy duty, galvanised hose reel with 30m double wire HP hose
- Thermoshield auto water dump valve
- Soft acting, frame mounted bypass valve
- Stainless steel lance with professional gun
- MINE Spec Compliant**
- Size: 120 x 140 x 155 (cm)



**CLASS B SAFETY EQUIPMENT AND  
TRAINING ARE A REQUIREMENT FOR  
THIS UNIT**



**SUPER  
HEAVY  
DUTY**



#### AUTOMATIC ENGINE

##### SHUT-DOWNS:

- Low water supply
- Low oil to pump
- Low fuel

##### MINE SPEC FEATURES:

- Emergency-stop
- Exhaust spark arrestor
- Lockable battery isolator
- Covered battery terminals
- Double wire insulation



## COLD DIESEL 10 HP (MINE SPEC TRAILER)

2 Single Axle Models Available

### D10M-36C-TO

RANGE Mine Spec.  
YANMAR DIESEL 10 HP – Electric Start – Cold  
3000 PSI (3625 PSI pump)  
15 LPM Flow

#### ENGINE AND PUMP

- Yanmar 10 HP electric start air-cooled diesel engine
- HAWK** NPM1525R Triplex Pump with brass head & ceramic pistons
- Low speed pump at 1450 RPM with 2:1 gearbox
- LubeBuddy** - An extra oil tank to keep pump well lubricated

#### FRAME

- Heavy Duty 4x4 style, fully hot dipped galvanised trailer
- Land Cruiser style wheels on 2-ton axle with spare wheel
- Mechanical disc brakes with manual hand brake
- LED side clearance lights
- Engine vibration mounted on separate sub-frame
- Stainless steel control box with hour meter & E-stop
- 1000 litre, red poly water tank

#### SUPPLY AND DELIVERY

- Double water intake to pump with dual filters
- Fitted with low water level auto shutdown
- Heavy duty, galvanised hose reel with 30m double wire HP hose
- Soft acting, frame mounted bypass valve
- Stainless steel lance with professional gun
- MINE Spec Compliant**
- Size: 410 x 185 x 180 (cm)
- Weight: 700kg

#### MINE SPEC FEATURES:

- Emergency-stop
- Exhaust spark arrestor
- Engine drip tray
- 2kg Fire extinguisher
- High Vis tape all round
- Painted draw bar
- Wheel nut indicators
- Wheel chocks mounted
- Lockable battery isolator
- Starter motor isolator
- Covered battery terminals
- Double wire insulation
- Anderson type jump-start receptacle

### D10M-36C-T

RANGE Mine Spec.  
YANMAR DIESEL 10 HP – Electric Start – Cold  
3000 PSI (3625 PSI pump)  
15 LPM Flow

Same machine as the D10M-36C-TO with the following differences

- 1000 litre, white IBC water tank
- Size: 360 x 185 x 180 (cm)
- Weight: 600kg



## HOT DIESEL 10 HP (MINE SPEC TRAILER)

2 Single Axle Models Available

### D10M-36H-TO

RANGE Mine Spec.  
YANMAR DIESEL 10 HP – Electric Start – Hot  
2600 - 3000 PSI (3625 PSI pump)  
15 LPM Flow

#### ENGINE AND PUMP

- Yanmar 10 HP electric start air-cooled diesel engine
- HAWK** NPM1525R Triplex Pump with brass head & ceramic pistons
- Low speed pump at 1450 RPM with 2:1 gearbox
- LubeBuddy** - An extra oil tank to keep pump well lubricated

#### BOILER / BURNER

- Vertical boiler with 1/2" mild steel coils, set to 70°C
- Stainless steel fuel tank to boiler (23 litres)

#### FRAME

- Heavy Duty 4x4 style, fully hot dipped galvanised trailer
- Land Cruiser style wheels on 2-ton axle with spare wheel
- Mechanical disc brakes with manual hand brake
- LED side clearance lights
- Engine vibration mounted on separate sub-frame
- Stainless steel control box with hour meter & E-stop
- 1000 litre, red poly water tank

#### SUPPLY AND DELIVERY

- Double water intake to pump with dual filters
- Fitted with low water level auto shutdown
- Heavy duty, galvanised hose reel with 30m double wire HP hose
- Soft acting, frame mounted bypass valve
- Stainless steel lance with professional gun
- MINE Spec Compliant**
- Size: 410 x 185 x 180 (cm)
- Weight: 750kg

#### MINE SPEC FEATURES:

- Emergency-stop
- Exhaust spark arrestor
- Engine drip tray
- 2kg Fire extinguisher
- High Vis tape all round
- Painted draw bar
- Wheel nut indicators
- Wheel chocks mounted
- Lockable battery isolator
- Starter motor isolator
- Covered battery terminals
- Double wire insulation
- Anderson type jump-start receptacle

### D10M-36H-T

RANGE Mine Spec.  
YANMAR DIESEL 10 HP – Electric Start – Hot  
2600 - 3000 PSI (3625 PSI pump)  
15 LPM Flow

Same machine as the D10M-36H-TO with the following differences

- 1000 litre, white IBC water tank
- Size: 360 x 185 x 180 (cm)
- Weight: 650kg



Non Mine Spec Versions Available for Both Models

## COLD DIESEL 10 HP (MINE SPEC TRAILER)

2 Double Axle Models Available

### D10M-36C-TD

RANGE Mine Spec.  
YANMAR DIESEL 10 HP – Electric Start – Cold  
3000 PSI (3625 PSI pump)  
15 LPM Flow

#### ENGINE AND PUMP

- Yanmar 10 HP electric start air-cooled diesel engine
- HAWK NPM152SR Triplex Pump with brass head & ceramic pistons
- Low speed pump at 1450 RPM with 2:1 gearbox
- LubeBuddy - An extra oil tank to keep pump well lubricated

#### FRAME

- Heavy Duty 4x4 style, fully hot dipped galvanised trailer
- Land Cruiser style wheels on dual 2.6-ton axles with spare wheel
- Electric disc brakes with automatic break-away system and with manual hand brake
- LED side clearance lights
- Engine vibration mounted on separate sub-frame
- Stainless steel control box with hour meter & E-stop
- 2000 litre, poly water tank

#### SUPPLY AND DELIVERY

- Double water intake to pump with dual filters
- Fitted with low water level auto shutdown
- Heavy duty, galvanised hose reel with 30m double wire HP hose
- Soft acting, frame mounted bypass valve
- Stainless steel lance with professional gun
- **MINE Spec Compliant**
- Size: 470 x 187 x 200 (cm)
- Weight: 1,450kg

#### MINE SPEC FEATURES:

- Emergency-stop
- Exhaust spark arrestor
- Engine drip tray
- 2kg Fire extinguisher
- High Vis tape all round
- Painted draw bar
- Wheel nut indicators
- Wheel chocks mounted
- Lockable battery isolator
- Starter motor isolator
- Covered battery terminals
- Double wire insulation
- Anderson type jump-start receptacle



### D10M-36C-TDP (PLATFORM TRAILER)

RANGE Mine Spec.  
YANMAR DIESEL 10 HP – Electric Start – Cold  
3000 PSI (3625 PSI pump)  
15 LPM Flow

Same machine as the D10M-36C-TD with the following differences

- Full walk-around platform for high reach cleaning
- Size: 470 x 187 x 300 (cm)
- Weight: 1,550kg



## HOT DIESEL 10 HP (MINE SPEC TRAILER)

2 Double Axle Models Available

### D10M-36H-TD

RANGE Mine Spec.  
YANMAR DIESEL 10 HP – Electric Start – Hot  
2600 - 3000 PSI (3625 PSI pump)  
15 LPM Flow

#### ENGINE AND PUMP

- Yanmar 10 HP electric start air-cooled diesel engine
- HAWK NPM152SR Triplex Pump with brass head & ceramic pistons
- Low speed pump at 1450 RPM with 2:1 gearbox
- LubeBuddy - An extra oil tank to keep pump well lubricated

#### BOILER / BURNER

- Vertical boiler with 1/2" mild steel coils, set to 70°C
- Stainless steel fuel tank to boiler (23 litres)

#### FRAME

- Heavy Duty 4x4 style, fully hot dipped galvanised trailer
- Land Cruiser style wheels on dual 2.6-ton axles with spare wheel
- Electric disc brakes with automatic break-away system and with manual hand brake
- LED side clearance lights
- Engine vibration mounted on separate sub-frame
- Stainless steel control box with hour meter & E-stop
- 2000 litre, poly water tank

#### SUPPLY AND DELIVERY

- Double water intake to pump with dual filters
- Fitted with low water level auto shutdown
- Heavy duty, galvanised hose reel with 30m double wire HP hose
- Soft acting, frame mounted bypass valve
- Stainless steel lance with professional gun
- **MINE Spec Compliant**
- Size: 470 x 187 x 200 (cm)
- Weight: 1,500kg

#### MINE SPEC FEATURES:

- Emergency-stop
- Exhaust spark arrestor
- Engine drip tray
- 2kg Fire extinguisher
- High Vis tape all round
- Painted draw bar
- Wheel nut indicators
- Wheel chocks mounted
- Lockable battery isolator
- Starter motor isolator
- Covered battery terminals
- Double wire insulation
- Anderson type jump-start receptacle



### D10M-36H-TDP (PLATFORM TRAILER)

RANGE Mine Spec.  
YANMAR DIESEL 10 HP – Electric Start – Hot  
2600 - 3000 PSI (3625 PSI pump)  
15 LPM Flow

Same machine as the D10M-36H-TD with the following differences

- Full walk-around platform for high reach cleaning
- Size: 470 x 187 x 300 (cm)
- Weight: 1,600kg





## COLD DIESEL 24 HP (MINE SPEC TRAILER)

### D24M-50C-T0

#### ENGINE AND PUMP

- Kohler 24 HP electric start air-cooled diesel engine
- **HAWK** PX12135 Triplex Pump with brass head & ceramic pistons
- Low speed pump at 1450 RPM with 2:1 gearbox
- **LubeBuddy** - An extra oil tank to keep pump well lubricated

#### FRAME

- Heavy Duty 4x4 style, fully hot dipped galvanised trailer
- Land Cruiser style wheels on 2-ton axle with spare wheel
- Mechanical disc brakes with manual hand brake
- LED side clearance lights
- Engine vibration mounted on separate sub-frame
- Stainless steel control box with hour meter & E-stop
- 1000 litre, red poly water tank

#### SUPPLY AND DELIVERY

- Double water intake to pump with dual filters
- Fitted with low water level auto shutdown
- Heavy duty, galvanised hose reel with 30m double wire HP hose
- Soft acting, frame mounted by-pass valve
- Stainless steel lance with professional gun
- **MINE Spec Compliant**
- Size: 410 x 185 x 180 (cm)
- Weight: 750kg

**CLASS B SAFETY EQUIPMENT AND TRAINING ARE A REQUIREMENT FOR THIS UNIT**



RANGE Mine Spec.  
**KOHLER DIESEL 24 HP** – Electric Start – Cold  
**4500 - 5000 PSI** (5000 PSI pump)  
21 LPM Flow



#### MINE SPEC FEATURES:

- Emergency-stop
- Exhaust spark arrestor
- Engine drip tray
- 2kg Fire extinguisher
- High Vis tape all round
- Painted draw bar
- Wheel nut indicators
- Wheel chocks mounted
- Lockable battery isolator
- Starter motor isolator
- Covered battery terminals
- Double wire insulation
- Anderson type jump-start receptacle

## HOT DIESEL 24 HP (MINE SPEC TRAILER)

### D24M-50H-TD

#### ENGINE AND PUMP

- Kohler 24 HP electric start air-cooled diesel engine
- **HAWK** PX12135 Triplex Pump with brass head & ceramic pistons
- Low speed pump at 1450 RPM with 2:1 gearbox
- **LubeBuddy** - An extra oil tank to keep pump well lubricated

#### BOILER / BURNER

- Vertical boiler with ½" mild steel coils, set to 70°C
- Stainless steel fuel tank to boiler (23 litres)

#### FRAME

- Heavy Duty 4x4 style, fully hot dipped galvanised trailer
- Land Cruiser style wheels on dual 2.6-ton axles with spare wheel
- Electric disc brakes with automatic break-away system and with manual hand brake
- LED side clearance lights
- Engine vibration mounted on separate sub-frame
- Stainless steel control box with hour meter & E-stop
- 2000 litre, poly water tank

#### SUPPLY AND DELIVERY

- Double water intake to pump with dual filters
- Fitted with low water level auto shutdown
- Heavy duty, galvanised hose reel with 30m double wire HP hose
- Soft acting, frame mounted by-pass valve
- Stainless steel lance with professional gun
- **MINE Spec Compliant**
- Size: 470 x 187 x 200 (cm)
- Weight: 1,550kg

**CLASS B SAFETY EQUIPMENT AND TRAINING ARE A REQUIREMENT FOR THIS UNIT**



### D24M-50H-TDP (PLATFORM TRAILER)



RANGE Mine Spec.  
**KOHLER DIESEL 24 HP** – Electric Start – Hot  
**4500 - 5000 PSI** (5000 PSI pump)  
21 LPM Flow

Same machine as the D24M-50H-TD with the following differences

- Full walk-around platform for high reach cleaning
- Size: 470 x 187 x 300 (cm)
- Weight: 1,650kg

**CLASS B SAFETY EQUIPMENT AND TRAINING ARE A REQUIREMENT FOR THIS UNIT**



# ELECTRIC WASH-BAY BLASTERS



## TYPICAL USERS

- Quarantine Wash-bays
- Heavy Equipment Wash-bays
- Trucking Wash-bays
- Mine Site Wash-bays
- Transport Company Wash-bays
- Car Repair Centers

## NOTE:

- All wash-bays should have a WashMate
- The 'Rental Spec' range is designed for a 5 day, 8 hour duty cycle.
- The 'Mine Spec' range is designed for a 7 day, 24 hour duty cycle.

**THOROUGH CLEAN**  
WATER BLASTERS Over-engineered — On purpose

## WASHMATE 3R-22C (OLD WASHMATE-10)

RANGE Rental Spec.  
ELECTRIC 3 HP (2.2kW) 240 Volt — Cold  
1100 - 1200 PSI @ 10 Amp draw  
1500 PSI @ 13 Amp draw  
11 LPM Flow — (2200 PSI pump)

### MOTOR AND PUMP

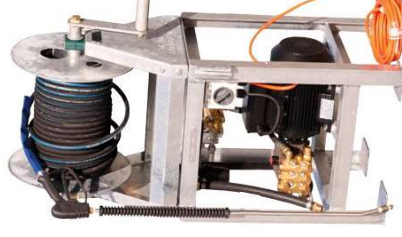
- Italian Heavy Duty, class 'H' wound, single-phase electric motor
- **HAWK** HD1115 Triplex Pump with brass head & ceramic pistons
- Low speed pump at 1450 RPM

### FRAME

- Fully hot dipped galvanised steel frame

### SUPPLY AND DELIVERY

- Frame mounted industrial water filter
- Heavy duty, galvanised hose reel with 30m double wire HP hose
- Soft acting, frame mounted bypass valve
- Thermoshield auto water dump valve
- Stainless steel lance with professional gun
- Size: 52 x 47 x 120 (cm)
- Weight: 105kg



## WASHMATE 10R-36C (OLD WASHMATE-1)

RANGE Rental Spec.  
ELECTRIC 10 HP (7.5kW) 415 Volt — Cold  
2800PSI @ 13 Amp draw  
18 LPM Flow — (3000 PSI pump)

### MOTOR AND PUMP

- Italian Heavy Duty, class 'F' wound, three-phase electric motor
- **HAWK** NPM1825 Triplex Pump with brass head & ceramic pistons
- Low speed pump at 1450 RPM
- **LubeBuddy** - An extra oil tank to keep pump well lubricated
- DOL motor starter, in control box

### FRAME

- Fully hot dipped galvanised steel frame
- Vibration mounted control box with hour meter

### SUPPLY AND DELIVERY

- Extra-large industrial water filter
- Stainless steel water break tank, fitted with low water level auto shutdown
- Pneumatic accumulator to prevent pressure spikes & water hammering
- Timed bypass auto shutdown when not in use.
- Soft acting bypass valve
- Heavy duty, galvanised hose reel with 30m double wire HP hose
- Stainless steel lance with professional gun
- Size: 68 x 57 x 150 (cm)
- Weight: 200kg



**ELECTRIC WASH-BAY BLASTERS**



## WASHMATE 15R-43C (OLD WASHMATE-3)

RANGE Rental Spec.  
ELECTRIC 1.5 HP (1.1 kW) 41.5 Volt – Cold  
3000 PSI @ 19 Amp draw  
18 LPM Flow – (4350 PSI pump)

### MOTOR AND PUMP

- Italian Heavy Duty, class 'F' wound, three-phase electric motor
- HAWK** XIT1830 Triplex Pump with brass head & ceramic pistons
- Low speed pump at 1450 RPM
- LubeBuddy** - An extra oil tank to keep pump well lubricated
- DOL motor starter, in stainless steel control box

### FRAME

- Fully hot dipped galvanised steel frame
- Vibration mounted stainless steel control box with hour meter

### SUPPLY AND DELIVERY

- Extra-large industrial water filter
- Stainless steel water break tank, fitted with low water level auto shutdown
- Pneumatic accumulator to prevent pressure spikes & water hammering
- Timed bypass auto shutdown when not in use.
- Soft acting bypass valve
- Heavy duty, galvanised hose reel with 30m double wire HP hose
- Stainless steel lance with professional gun
- Size: 68 x 57 x 150 (cm)
- Weight: 230kg



## WASHMATE 10R-36H (OLD WASHMATE-15)

RANGE Rental Spec.  
ELECTRIC 1.0 HP (0.75 kW) 41.5 Volt – Hot  
2800 PSI @ 13 Amp draw  
18 LPM Flow – (3625 PSI pump)

### MOTOR AND PUMP

- Italian Heavy Duty, class 'F' wound, three-phase electric motor
- HAWK** NPM1825 Triplex Pump with brass head & ceramic pistons
- Low speed pump at 1450 RPM
- LubeBuddy** - An extra oil tank to keep pump well lubricated
- DOL motor starter, in stainless steel control box

### BOILER / BURNER

- Horizontal boiler with 1/2" mild steel coils, set to 70°C

### FRAME

- Fully hot dipped galvanised steel frame
- Vibration mounted stainless steel control box with hour meter

### SUPPLY AND DELIVERY

- Extra-large industrial water filter
- Stainless steel water break tank, fitted with low water level auto shutdown
- Pneumatic accumulator to prevent pressure spikes & water hammering
- Timed bypass auto shutdown when not in use.
- Soft acting, frame mounted bypass valve
- Heavy duty, galvanised hose reel with 30m double wire HP hose
- Stainless steel lance with professional gun
- Size: 115 x 65 x 150 (cm)
- Weight: 250kg



## WASHMATE 15M-43C (OLD WASHMATE-4)

RANGE Mine Spec.  
ELECTRIC 1.5 HP (1.1 kW) 41.5 Volt – Cold  
3400 PSI @ 19 Amp draw  
22 LPM Flow – (4350 PSI pump)

### MOTOR AND PUMP

- WEG Heavy Duty, class 'H' wound, three-phase electric motor
- HAWK** XIT2230 Triplex Pump with brass head & ceramic pistons
- Low speed pump at 1450 RPM
- LubeBuddy** - An extra oil tank to keep pump well lubricated
- Star-Delta soft starter, in stainless steel control box

### FRAME

- Fully hot dipped galvanised steel frame
- Vibration mounted stainless steel control box with hour meter

### SUPPLY AND DELIVERY

- Extra-large industrial water filter
- Stainless steel water break tank, fitted with low water level auto shutdown
- Pneumatic accumulator to prevent pressure spikes & water hammering
- Timed bypass auto shutdown when not in use.
- Soft acting bypass valve
- Heavy duty, galvanised hose reel with 30m double wire HP hose
- Size: 120 x 80 x 140 (cm)
- Weight: 370kg



**SUPER  
HEAVY  
DUTY**

**Designed and engineered to work 24/7 in extreme environments**

## WASHMATE 15M-43H (OLD WASHMATE-5)

RANGE Mine Spec.  
ELECTRIC 1.5 HP (1.1 kW) 41.5 Volt – Hot  
3400 PSI @ 19 Amp draw  
22 LPM Flow – (4350 PSI pump)

### MOTOR AND PUMP

- WEG Heavy Duty, class 'H' wound, three-phase electric motor
- HAWK** XIT2230 Triplex Pump with brass head & ceramic pistons
- Low speed pump at 1450 RPM
- LubeBuddy** - An extra oil tank to keep pump well lubricated
- Star-Delta soft starter, in stainless steel control box

### BOILER / BURNER

- Super heavy duty** horizontal boiler with 1/2" mild steel coils, set to 70°C

### FRAME

- Fully hot dipped galvanised steel frame
- Vibration mounted stainless steel control box with hour meter

### SUPPLY AND DELIVERY

- Extra-large industrial dual water filters
- Timed bypass auto shutdown when not in use.
- Water break tank, fitted with low water level auto shutdown
- Pneumatic accumulator to prevent pressure spikes & water hammering
- Soft acting bypass valve
- Heavy duty, galvanised hose reel with 30m double wire HP hose
- Size: 120 x 80 x 170 (cm)
- Weight: 550kg



**SUPER  
HEAVY  
DUTY**

**Designed and engineered to work 24/7 in extreme environments**

# UNDER BODY WHEEL WASH



## TYPICAL USERS

- Weed and Seed Control
- Quarries
- Mine Sites
- Landfill Operations
- Construction Sites

**THOROUGHCLEAN**  
WATER BLASTERS Over-engineered — On purpose

## COLD WATER ELECTRIC

### WASHMATE 32R-8.5C-WW

RANGE Rental Spec.  
ELECTRIC 32 HP (24kW) 41.5 Volt  
85 PSI @ 40 Amp draw  
1000 LPM Flow  
20 - 40 SEC Cycle Time

#### MOTOR AND PUMP

- Heavy Duty, class 'F' wound, three-phase electric motor
- Submersible pump and motor unit
- Star-Delta soft starter, in double door control box

#### FRAME

- Double epoxy coated steel frame
- Low vibration frame rated to 25T per axle
- AS certified lifting lugs

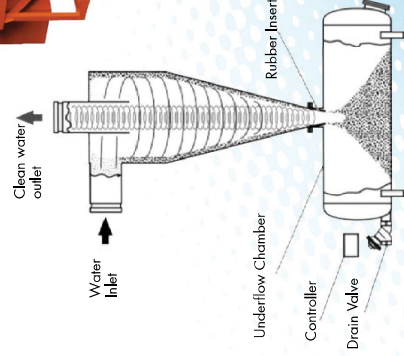
#### SUPPLY AND DELIVERY

- 12 horizontal mounted nozzles each side at 600mm high
- 12 horizontal mounted nozzles each side at 950mm high
- 48 nozzles from below, cleaning under body
- 96 nozzles in total
- Size: 220 x 510 x 100 (cm) above ground
- Weight: 4000kg



#### OPTIONAL EXTRAS

- Fully hot dipped galvanised frame.
- Additional shaker grid.
- Steel pit for portable installation.
- Extended spray screens.
- Hydrocyclone solids separator.
- Traffic lights.
- Traffic signs.
- Electronic vehicle sensor to remotely activate the water sprays.
- Emergency stop button.
- Stainless steel control housing.



Flow Scheme of Hydrocyclone and Mode of Separation

#### UNIQUE FEATURES

- Fast and effective washing process.
- Washing starts automatically (no need for an operator).
- The wheel wash works effectively with passenger vehicles right up to heavy duty mining vehicles without adjustment.
- **Sludge Removal.** Automatic chain driven scraper conveyor system.

## UNDER BODY WHEEL WASH



# ULTRA HIGH PRESSURE BLASTERS



## TYPICAL USERS

- Ship Hull Cleaning (Blasting off Barnacles)
- Strip Epoxy Paint Back to Bare Metal
- Concrete Hydro Demolition
- Boiler Tube Cleaning

When ship hull cleaning, this unit is used instead of scraping + blasting with a 5000 PSI machine. It is able to do both jobs in a single pass.

**THOROUGH CLEAN**  
WATER BLASTERS Over-engineered — On purpose

## COLD DIESEL 160 HP (MINE SPEC)

### D160M-360C

RANGE Mine Spec:  
**AGCO SISU DIESEL** 160 HP – Water Cooled  
**36,000 PSI** (36,000 PSI pump)  
**25 LPM** Flow



#### ENGINE AND PUMP

- Finland made Agco Sisu 160 HP electric start water-cooled diesel engine
- Low speed engine at 1800 RPM
- Triplex carbide plunger pump with high tensile stainless steel head
- Extra low speed pump at 580 RPM
- 2 x 43,000 PSI safety rupture disks

#### FRAME

- Fully hot dipped galvanised frame & powder coated
- Forkliftable + 4 x AS certified lifting lugs
- Engine vibration mounted on separate sub-frame

#### SUPPLY AND DELIVERY

- Dual stainless steel industrial water filters
- 180 litre water break tank, fitted with low water level auto shutdown
- 20m UHP hose with stainless steel fittings
- Stainless steel lance with 40,000 PSI dump gun
- Ultra impact self-propelled rotating nozzle with 4 Sapphire jets with hydraulic brake

#### MINE Spec Compliant

- Size: 225 x 95 x 130 (cm)
- Weight: 2000kg

#### MINE SPEC FEATURES:

- Frame mounted water tank with automatic low water level shut down.
- Emergency-Stop
- Exhaust spark arrestor - AS1019, 2000 certified.
- Engine drip tray
- 2.5kg Fire extinguisher
- High visibility tape
- Lockable battery isolator
- Starter motor isolator
- Covered battery terminals
- Double wire insulation on all non-OEM wires
- Anderson type jump-start receptacle
- Designed to meet AS/NZS4233:2

Non Mine Spec Version Also Available



CLASS B SAFETY EQUIPMENT AND  
TRAINING ARE A REQUIREMENT FOR  
THIS UNIT



**ULTRA HIGH PRESSURE BLASTERS**



# HYDROSTATIC PORTABLE TESTERS



## TYPICAL USERS

- Fire Hose Testing
- Pipe Testing
- Vessel Testing

These units are used where it is a legal or contractual requirement to do pressure testing on installed pipes or vessels.

## NOTE:

- Most of our Pressure Testers can also function as Pressure Cleaners.
- Also, all of our Pressure Cleaners can be converted to have this dual function.

**THOROUGH**  
**CLEAN**  
*WATER BLASTERS Over-engineered — On purpose*

## E3R-15C-PT HYDROSTATIC TESTER

RANGE Rental Spec.  
ELECTRIC 3 HP (2.2kW) 240 Volt — Cold  
300 PSI @ 10 Amp draw  
50 LPM Flow — (2175 PSI pump)



### MOTOR AND PUMP

- Italian Heavy Duty, class 'H' wound, single-phase electric motor
- **HAWK** XT15015 Triplex Pump with brass head & ceramic pistons
- Low speed pump at 1450 RPM

### FRAME

- Fully hot dipped galvanised steel frame
- 4 fire hose testing ports

### SUPPLY AND DELIVERY

- Large industrial water filter
- Can test up to four hoses at once
- Pressure tester manifold with gauge and block valve
- Size: 62 x 52 x 70 (cm)
- Weight: 70kg

**Built for QLD Fire and Rescue Service**

## P6R-17C-PT HYDROSTATIC TESTER

RANGE Rental Spec.  
HONDA PETROL 6.5 HP Class Recoil Start — Cold  
1500 PSI (11750 PSI pump)  
14 LPM Flow



### ENGINE AND PUMP

- Genuine Honda GX200 recoil start engine
- **HAWK** NHD1215 Triplex Pump with brass head & ceramic pistons
- Low speed pump at 1450 RPM with 2:1 gearbox

### FRAME

- Fully hot dipped galvanised steel frame

### SUPPLY AND DELIVERY

- Frame mounted industrial water filter
- 20m double wire HP hose
- Pressure tester manifold with dual gauges and block valve
- Adjustable valve (0 PSI — 1600 PSI)
- Size: 67 x 61 x 63 (cm)
- Weight: 65kg

**HYDROSTATIC PORTABLE TESTERS**



# PETROL & DIESEL FIRE FIGHTERS



## TYPICAL USERS

- Skid - Mobile fire fighting, where unit can be fitted on to ute / truck.
- Trailers - Where mobility is important, just connect to any ute, truck or SUV.

**THOROUGH-CLEAN**  
WATER BLASTERS. Over-engineered — On purpose

## P6R-1.7-SF D7R-1.7-SF



### ENGINE AND PUMP

- Genuine Honda GX200 recoil start engine OR YANMAR L70N diesel, electric start engine
- DAVEY Fire Fighting Pump with twin impellers, self-priming

### FRAME

- Fully hot dipped galvanised steel frame, forkliftable
- 1000 litre, white IBC water tank

### SUPPLY AND DELIVERY

- 5 meters 1 1/2" pool/dam suction hose, with strainer
- Heavy duty, galvanised hose reel with 30m AS
- Certified fire fighting hose
- Size: 175 x 125 x 140 (cm)
- Weight: 350kg



RANGE Fire Fighting Skid  
HONDA PETROL 6.5 HP Class — Recoil Start OR  
YANMAR DIESEL 6.7 HP — Electric Start  
165 PSI Pump (11135 kPa)  
400 LPM Flow

## P6R-1.7-TF D7R-1.7-TF



RANGE Fire Fighting Trailer  
HONDA PETROL 6.5 HP Class — Recoil Start OR  
YANMAR DIESEL 6.7 HP — Electric Start  
165 PSI Pump (11135 kPa)  
400 LPM Flow

Same machine as the P6R-1.7-SF & D7R-1.7-SF assembled on a trailer unit

### FRAME

- Heavy Duty 4x4 style, fully hot dipped galvanised trailer
- Mechanical disc brakes with manual hand brake
- Engine vibration mounted on separate sub-frame
- 1000 litre, white IBC water tank

### SUPPLY AND DELIVERY

- Size: 360 x 185 x 180 (cm)
- Weight: 600kg



## P6R-1.7-TFO D7R-1.7-TFO



RANGE Fire Fighting Trailer  
HONDA PETROL 6.5 HP Class — Recoil Start OR  
YANMAR DIESEL 6.7 HP — Electric Start  
165 PSI Pump (11135 kPa)  
400 LPM Flow

Same machine as the P6R-1.7-TF & D7R-1.7-TF with the following differences

### FRAME

- 1000 litre, red poly water tank

### SUPPLY AND DELIVERY

- Size: 410 x 185 x 180 (cm)
- Weight: 700kg



# PETROL & DIESEL FIRE FIGHTERS

# HOT BOXES



## TYPICAL USERS

- Wash-bay users who want to degrease / sanitise with hot water
- Anyone needing to add hot water capabilities to their pressure cleaner
- A heavy duty high pressure boiler, specifically designed for use with our existing high pressure cleaner range (or other pressure cleaners).

**THOROUGH CLEAN**  
WATER BLASTERS. Over-engineered — On purpose

## AC HOT BOX

**RANGE** 240V Diesel Boiler  
**ELECTRIC** 240V Driven, Diesel Fired Burner  
**4350 PSI** Rated Pressure  
**21 LPM** Rated Flow

### BOILER / BURNER

- Vertical boiler with ½" mild steel coils, set to **70°C**

### FRAME

- Fully hot dipped galvanised steel frame
- Vibration mounted stainless steel control box
- Stainless steel fuel tank to boiler (23 litres)
- Exhaust canopy (not shown)

### SUPPLY AND DELIVERY

- Auto burner shut down controlled via float switch
- Oversized diesel fuel filter
- 2 x 3m connecting hoses with 3/8" M/F fittings
- Size: 80 x 60 x 120 (cm)
- Weight: 150kg



## DC HOT BOX

**RANGE** 12V Diesel Boiler  
**ELECTRIC** 12V Driven, Diesel Fired Burner  
**4350 PSI** Rated Pressure  
**21 LPM** Rated Flow

### BOILER / BURNER

- Vertical boiler with ½" mild steel coils, set to **70°C**

### FRAME

- Fully hot dipped galvanised steel frame
- Vibration mounted stainless steel control box
- Stainless steel fuel tank to boiler (23 litres)
- Exhaust canopy

### SUPPLY AND DELIVERY

- Auto burner shut down controlled via float switch
- Oversized diesel fuel filter
- 2 x 3m connecting hoses with 3/8" M/F fittings
- Size: 80 x 50 x 110 (cm)
- Weight: 150kg





# SPECIALISED BUILDS



## TYPICAL USERS

- Drain Cleaners
- Anyone cleaning large surface areas such as driveways, carparks and pathways

# THOROUGHCLEAN

WATER BLASTERS Over-engineered — On purpose

## JETTING MACHINE

Ideal for cleaning drains

### P27R-43C

RANGE Rental Spec.  
VANGUARD PETROL 27 HP- Electric Start — Cold  
3000-4000 PSI (4350 PSI pump)  
27 LPM Flow

#### ENGINE AND PUMP

- HAWK XT2730 Triplex Pump rated at 4350 PSI max @ 27LPM
- Low speed pump at 1450 RPM with 2:1 gearbox

#### FRAME

- Fully hot dipped galvanised frame
- Engine vibration mounted on separate sub-frame
- Stainless steel 23 litre fuel tank.
- Extra-large 'flat free' wheels for easy rolling over uneven surfaces

#### SUPPLY AND DELIVERY

- Heavy duty pressure gauge
- Galvanised hose storage rack with 30m double wire HP Hose
- Size: 125 x 85 x 95 cm
- Weight: 187kg



## PETROL SURFACE CLEANER

Ideal for cleaning driveways and other large surface areas

### P13R-36C-RSC

RANGE Rental Spec.  
HONDA PETROL 13 HP Recoil Start — Cold  
2600-3000 PSI (3625 PSI pump)  
18 LPM Flow

#### ENGINE AND PUMP

- HAWK NMT1825 Triplex Pump with brass head & ceramic pistons
- Low speed pump at 1450 RPM with 2:1 gearbox

#### FRAME

- Fully hot dipped galvanised frame
- Stair climbing wheel position (rear).
- Brake castors.
- Fold up handle.
- Hose storage rack.

#### SUPPLY AND DELIVERY

- Heavy duty pressure gauge
- Galvanised hose storage rack with 10m double wire HP Hose
- Size: 136 x 62 x 89 cm
- Weight: 110kg



# SPECIALISED BUILDS